



# Diesel Fuel Storage Monitoring

Monitor diesel volumes and flow rates on your remotely located fuel storage tanks.

Increase efficiency by monitoring fuel usage and optimising storage capacity.

Verify diesel delivery times and volumes.

Monitor the quality of your diesel and alert for the presence of water.

Reduce theft by knowing when fuel is being drawn.



Use the 4-20mA inputs to connect a fuel-compatible 4-20mA level sensor or ultrasonic sensor.

Use the pulse input or RS232 or RS485 to connect to a flow sensor.

Receive an automated warning when fuel levels drop below your minimum requirement.

Control delivery of fuel through the monitoring of customer tags.

# Why Senquip?



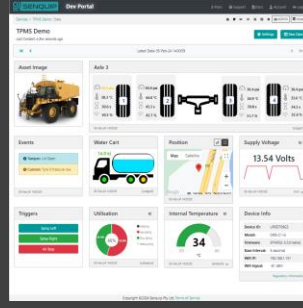
## Connect to Anything

Interface to any engine, controller, or sensor, no matter the brand, physical interface, or protocol.



## Process Everything

Edge process measured data, create custom alerts, and control connected systems.



## Send Anywhere

Send data to the Senquip Portal or any other server. No ongoing costs, no lock in contracts.



## Trusted Everywhere

Designed for use in harsh industrial, mining, and agricultural environments.



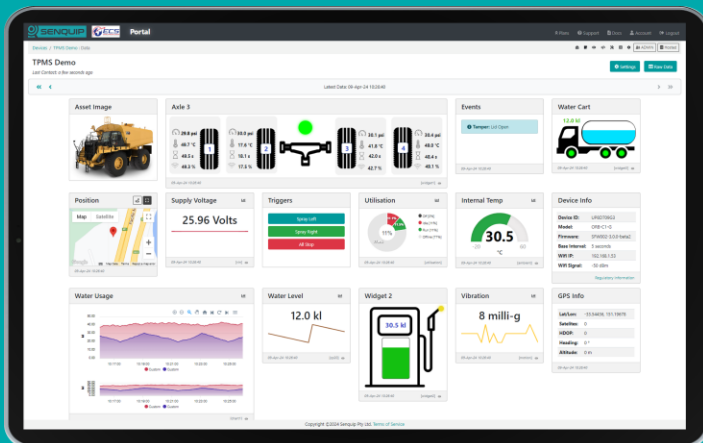
## Senquip ORB

For extreme environments where IP ratings are essential and external antennas may be damaged. Typically mounted on poles, walls, and externally on machines



## Senquip QUAD

For harsh environments where external antennas are a benefit. Typically found in electrical cabinets, in operator cabs, and mounted externally on machines.



## Senquip Portal

The Senquip Portal is a secure cloud solution that offers a no-cost or low-cost device management and data hosting + analytics solution for Senquip devices.



TELEMETRY FOR HARSH ENVIRONMENTS