



Silo Level Measurement

Monitor the level and volume of storage in your remotely located grain silos.

Maximise the utilisation of silo capacity and product through reliable measurement.

Real-time level or volume indication for supply and replenishment.

One remote monitoring solution whether you use weight, ultrasonic, radar or laser measurement.



Connect with Load-cells using the 4-20mA or voltage inputs.

Radar, or ultrasonic level sensors connect to the 4-30mA or MODBUS inputs.

Monitor tilt of the structures with the inbuilt 3-axis accelerometer.

Set minimum and maximum warning and alarm levels for material levels and volumes.

Why Senquip?



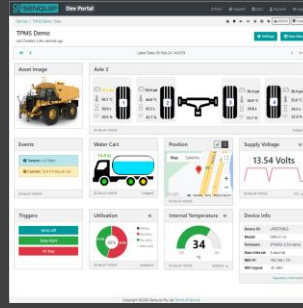
Connect to Anything

Interface to any engine, controller, or sensor, no matter the brand, physical interface, or protocol.



Process Everything

Edge process measured data, create custom alerts, and control connected systems.



Send Anywhere

Send data to the Senquip Portal or any other server. No ongoing costs, no lock in contracts.



Trusted Everywhere

Designed for use in harsh industrial, mining, and agricultural environments.



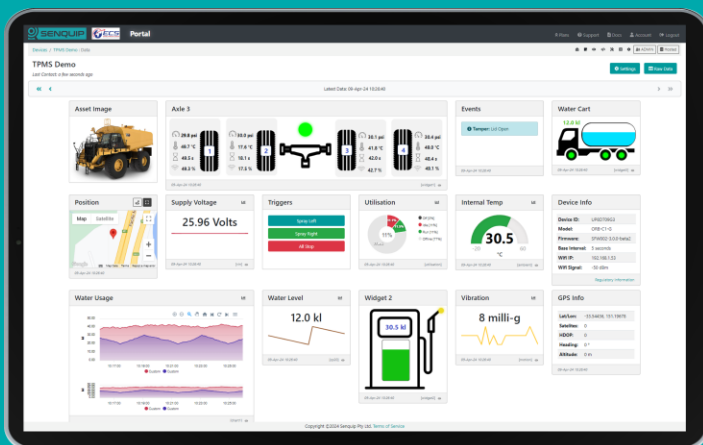
Senquip ORB

For extreme environments where IP ratings are essential and external antennas may be damaged. Typically mounted on poles, walls, and externally on machines



Senquip QUAD

For harsh environments where external antennas are a benefit. Typically found in electrical cabinets, in operator cabs, and mounted externally on machines.



Senquip Portal

The Senquip Portal is a secure cloud solution that offers a no-cost or low-cost device management and data hosting + analytics solution for Senquip devices.



TELEMETRY FOR HARSH ENVIRONMENTS