



Flood Situational Awareness

Monitor rainfall, water levels in rivers, dams, lakes and levees.

Receive early warning of rising levels with online SMS and email alerts.

Communicate between devices to enable remote actions like turning on a remote warning light.

Easy installation with solar or battery operation,

Use the current source or voltage input to monitor water level with a 4-20mA or voltage output depth sensor.

Extremely low power consumption means many years of operation on AA batteries or solar.

Integrated GPS for easy location identification.

Send data directly to your favorite dashboard.

Why Senquip?



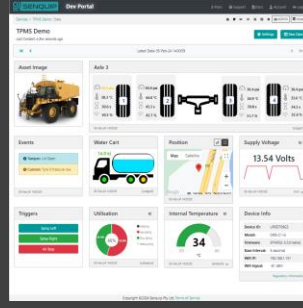
Connect to Anything

Interface to any engine, controller, or sensor, no matter the brand, physical interface, or protocol.



Process Everything

Edge process measured data, create custom alerts, and control connected systems.



Send Anywhere

Send data to the Senquip Portal or any other server. No ongoing costs, no lock in contracts.



Trusted Everywhere

Designed for use in harsh industrial, mining, and agricultural environments.



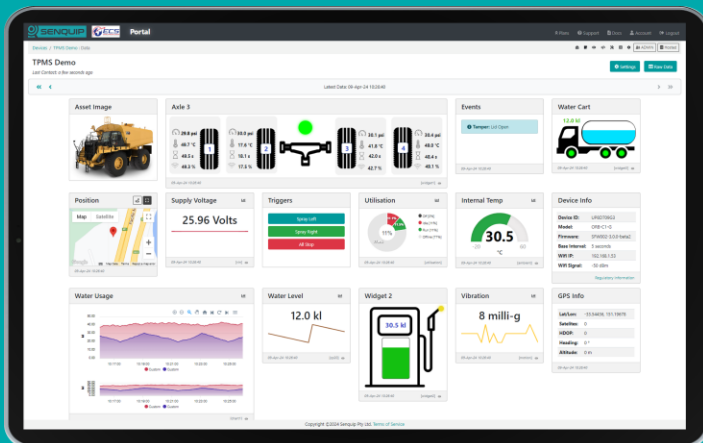
Senquip ORB

For extreme environments where IP ratings are essential and external antennas may be damaged. Typically mounted on poles, walls, and externally on machines



Senquip QUAD

For harsh environments where external antennas are a benefit. Typically found in electrical cabinets, in operator cabs, and mounted externally on machines.



Senquip Portal

The Senquip Portal is a secure cloud solution that offers a no-cost or low-cost device management and data hosting + analytics solution for Senquip devices.



TELEMETRY FOR HARSH ENVIRONMENTS