



# Managing Water Tankers

Know where your water tankers are and monitor rates of water application across your site to ensure optimum asset utilization.

Monitor tank water levels to maximise capacity.

Monitor vehicle speed as well as pitch and roll to ensure safe operation across your site.

Know that the batteries of your vehicles are charged and ready for operation.

Inbuilt GPS provides accurate position and speed.

Connect a water level sensor to the 4-20mA or voltage inputs.

Use the pulse inputs to connect a flow meter.

Integrated accelerometers measure pitch and roll.

Send measured data to the server of your choice.



# Why Senquip?



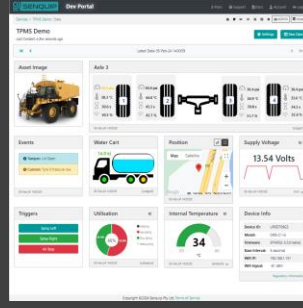
## Connect to Anything

Interface to any engine, controller, or sensor, no matter the brand, physical interface, or protocol.



## Process Everything

Edge process measured data, create custom alerts, and control connected systems.



## Send Anywhere

Send data to the Senquip Portal or any other server. No ongoing costs, no lock in contracts.



## Trusted Everywhere

Designed for use in harsh industrial, mining, and agricultural environments.



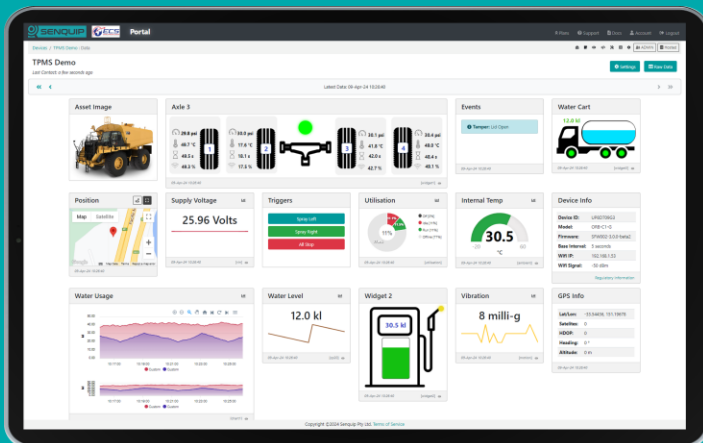
## Senquip ORB

For extreme environments where IP ratings are essential and external antennas may be damaged. Typically mounted on poles, walls, and externally on machines



## Senquip QUAD

For harsh environments where external antennas are a benefit. Typically found in electrical cabinets, in operator cabs, and mounted externally on machines.



## Senquip Portal

The Senquip Portal is a secure cloud solution that offers a no-cost or low-cost device management and data hosting + analytics solution for Senquip devices.



CONNECTING MACHINES TO THE INTERNET