



# Monitoring Fire Systems

Monitor battery voltage and fuel level to ensure pump is ready to operate when needed. Measure water pressure or level to ensure water source is ready to supply.

Perform remote engine tests with remote start, stop, and engine speed control.

Monitor engine performance and receive engine fault codes to facilitate preventative maintenance. Measure engine hours to ensure on-time servicing.

Connect to the engine controller with Modbus, CAN-Bus, or a simple relay.

Measure water level and pressure with 4-20mA inputs.

Write a simple script to enable remote testing.

Wi-Fi connectivity with backup 4G and 5G LTE.

Internal battery backup.



# Why Senquip?



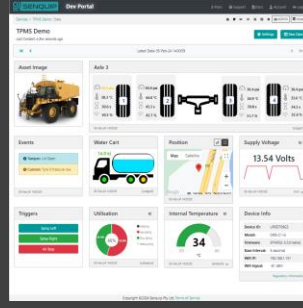
## Connect to Anything

Interface to any engine, controller, or sensor, no matter the brand, physical interface, or protocol.



## Process Everything

Edge process measured data, create custom alerts, and control connected systems.



## Send Anywhere

Send data to the Senquip Portal or any other server. No ongoing costs, no lock in contracts.



## Trusted Everywhere

Designed for use in harsh industrial, mining, and agricultural environments.



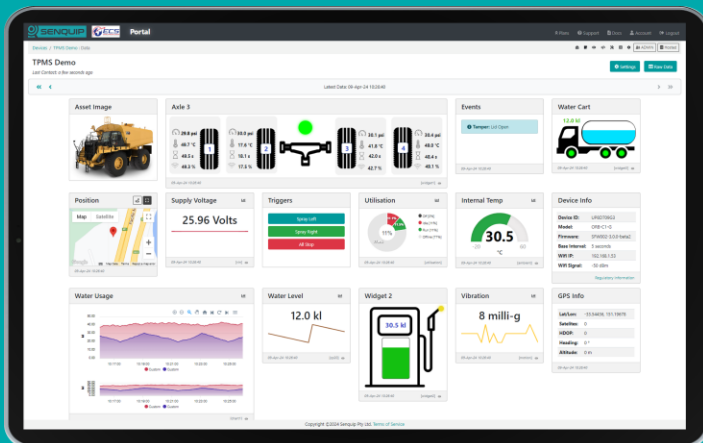
## Senquip ORB

For extreme environments where IP ratings are essential and external antennas may be damaged. Typically mounted on poles, walls, and externally on machines



## Senquip QUAD

For harsh environments where external antennas are a benefit. Typically found in electrical cabinets, in operator cabs, and mounted externally on machines.



## Senquip Portal

The Senquip Portal is a secure cloud solution that offers a no-cost or low-cost device management and data hosting + analytics solution for Senquip devices.



TELEMETRY FOR HARSH ENVIRONMENTS