



Connect temperature and humidity sensors to the MODBUS, CAN-Bus. Or 4-20mA inputs or use wireless Bluetooth.

Connect pressure, ultrasonic, or radar water level sensors to the 4-20mA inputs.

Monitor flow with the frequency input.

Monitor door switches with the voltage inputs.



# Greenhouse Monitoring

Ensure the temperature, humidity and lighting levels of your greenhouse are maintained at an optimal level.

Monitor water levels and flow rates.

Receive instant alerts if heaters, fans or irrigation systems fail or if the power fails.

Monitor access doors to ensure bio-security.

# Why Senquip?



## Connect to Anything

Interface to any engine, controller, or sensor, no matter the brand, physical interface, or protocol.



## Process Everything

Edge process measured data, create custom alerts, and control connected systems.



## Send Anywhere

Send data to the Senquip Portal or any other server. No ongoing costs, no lock in contacts.



## Trusted Everywhere

Designed for use in harsh industrial, mining, and agricultural environments.



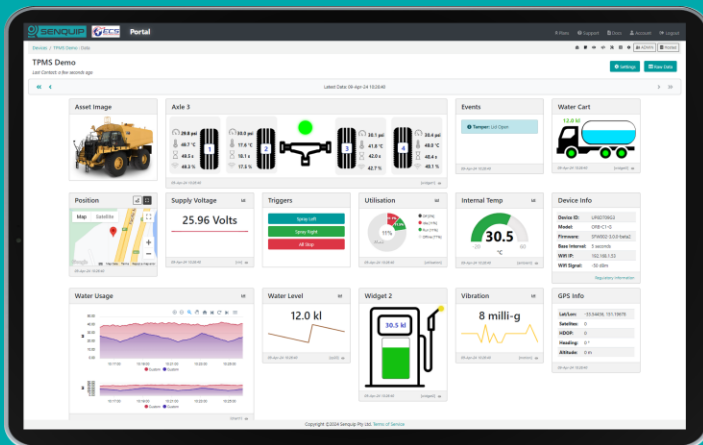
## Senquip ORB

For extreme environments where IP ratings are essential and external antennas may be damaged. Typically mounted on poles, walls, and externally on machines



## Senquip QUAD

For harsh environments where external antennas are a benefit. Typically found in electrical cabinets, in operator cabs, and mounted externally on machines.



## Senquip Portal

The Senquip Portal is a secure cloud solution that offers a no-cost or low-cost device management and data hosting + analytics solution for Senquip devices.



TELMETRY FOR HARSH ENVIRONMENTS