



Water Quality Management

Receive real-time updates of clarity, salinity, acidity, dissolved oxygen, conductivity depth and more.

Perfect for monitoring water quality in natural and industrial environments including streams, watersheds, wells, caves, water/wastewater treatment plants, aquaculture operations, landfills, and processing plants.

Send data to the dashboard of your choice securely.



Interface to a multi-parameter SONDE using the RS232, RS485, or MODBUS interface.

Measure water level or pressure using a 4-20mA current or voltage output level sensor.

Implement complex measurements by writing your own script.

Run off AA batteries or solar with integrated regulator and backup battery.

Why Senquip?



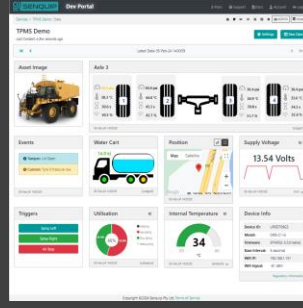
Connect to Anything

Interface to any engine, controller, or sensor, no matter the brand, physical interface, or protocol.



Process Everything

Edge process measured data, create custom alerts, and control connected systems.



Send Anywhere

Send data to the Senquip Portal or any other server. No ongoing costs, no lock in contracts.



Trusted Everywhere

Designed for use in harsh industrial, mining, and agricultural environments.



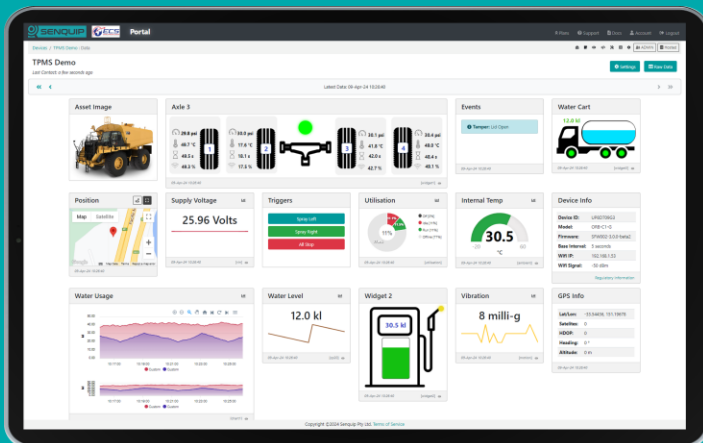
Senquip ORB

For extreme environments where IP ratings are essential and external antennas may be damaged. Typically mounted on poles, walls, and externally on machines



Senquip QUAD

For harsh environments where external antennas are a benefit. Typically found in electrical cabinets, in operator cabs, and mounted externally on machines.



Senquip Portal

The Senquip Portal is a secure cloud solution that offers a no-cost or low-cost device management and data hosting + analytics solution for Senquip devices.



TELEMETRY FOR HARSH ENVIRONMENTS