



Electronic Engine Controller Monitoring

Track key parameters on your off-highway equipment such as location, engine hours, fuel level, oil-quality, and fault codes.

Remotely or autonomously start or stop your machines or generate local shutdown based on measured values.

Enovation, Deep Sea, ComAp, Kensho, SmartGen, and other popular makes.



Integrated GPS for location.

Connect engine controller via CAN-bus or Modbus or directly to the engine with CAN Bus.

Measure pitch and roll to ensure level operation and correct engine oil coverage.

Connect to pressure, level, flow and other sensors with 4-20mA, voltage and BLE peripherals.

Write a script to remotely control.

Why Senquip?



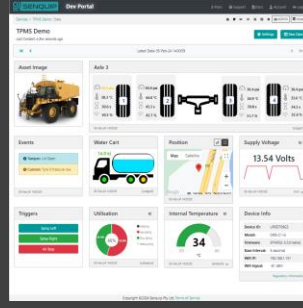
Connect to Anything

Interface to any engine, controller, or sensor, no matter the brand, physical interface, or protocol.



Process Everything

Edge process measured data, create custom alerts, and control connected systems.



Send Anywhere

Send data to the Senquip Portal or any other server. No ongoing costs, no lock in contracts.



Trusted Everywhere

Designed for use in harsh industrial, mining, and agricultural environments.



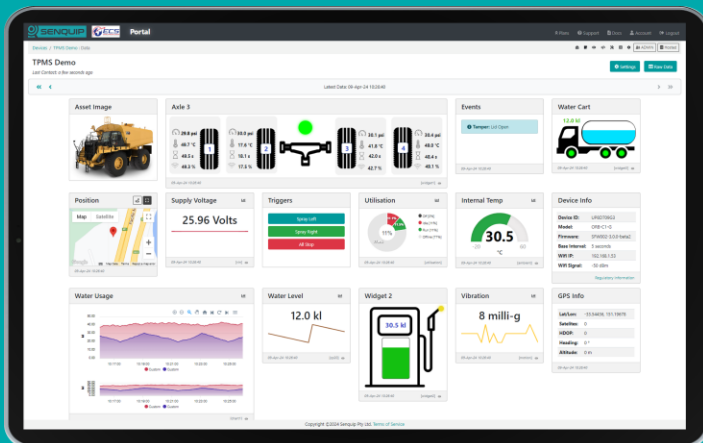
Senquip ORB

For extreme environments where IP ratings are essential and external antennas may be damaged. Typically mounted on poles, walls, and externally on machines



Senquip QUAD

For harsh environments where external antennas are a benefit. Typically found in electrical cabinets, in operator cabs, and mounted externally on machines.



Senquip Portal

The Senquip Portal is a secure cloud solution that offers a no-cost or low-cost device management and data hosting + analytics solution for Senquip devices.



CONNECTING MACHINES TO THE INTERNET