



Use the CAN Bus peripheral to interface with the battery and drive system. Write a script to interpret non-standard CAN messages.

Serial, CAN Bus and inputs allow connect to TPMS, fire, and other systems.

Built in GPS measures position and speed and built-in tilt monitoring allows for rollover detection.



# Electric Bus Monitoring

Measure battery state of charge, energy usage, regeneration, and battery health.

Measure utilisation, mileage, and driver behaviour.

Connect to tyre pressure monitoring, door systems, fire detection systems and passenger monitoring systems.

Send data to the server of your choice.

# Why Senquip?



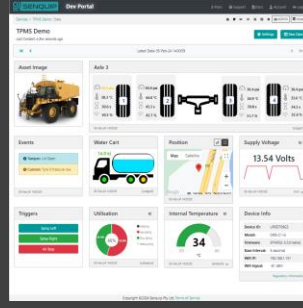
## Connect to Anything

Interface to any engine, controller, or sensor, no matter the brand, physical interface, or protocol.



## Process Everything

Edge process measured data, create custom alerts, and control connected systems.



## Send Anywhere

Send data to the Senquip Portal or any other server. No ongoing costs, no lock in contracts.



## Trusted Everywhere

Designed for use in harsh industrial, mining, and agricultural environments.



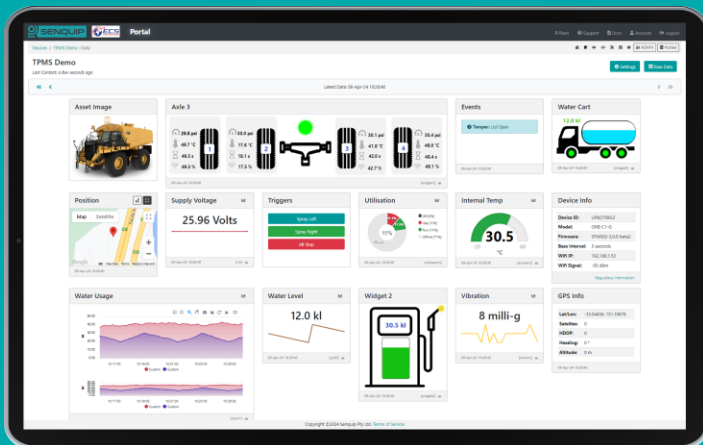
## Senquip ORB

For extreme environments where IP ratings are essential and external antennas may be damaged. Typically mounted on poles, walls, and externally on machines



## Senquip QUAD

For harsh environments where external antennas are a benefit. Typically found in electrical cabinets, in operator cabs, and mounted externally on machines.



## Senquip Portal

The Senquip Portal is a secure cloud solution that offers a no-cost or low-cost device management and data hosting + analytics solution for Senquip devices.



CONNECTING MACHINES TO THE INTERNET