



Drill Rig Monitoring

Monitor location and tamper to ensure your drill rigs are safe.

Measure utilisation by ignition, boom up, or drilling hours.

Measure fuel consumption and calculate carbon footprint to facilitate ESG reporting.

Measure water flow, drill speed, and drill rate to ensure correct operation of equipment.

Monitor engine performance and receive engine faults warnings to allow for preventative maintenance.

Connect to engine controller CAN-Bus or Modbus to measure performance and receive fault codes.

Measure angle with integrated 3-axis accelerometer to ensure drill is level.

Measure water flow and drill rate with 4-20mA inputs.

Write a simple script to calculate utilisation.

Integrated GPS for location.

Why Senquip?



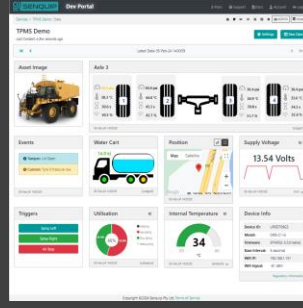
Connect to Anything

Interface to any engine, controller, or sensor, no matter the brand, physical interface, or protocol.



Process Everything

Edge process measured data, create custom alerts, and control connected systems.



Send Anywhere

Send data to the Senquip Portal or any other server. No ongoing costs, no lock in contracts.



Trusted Everywhere

Designed for use in harsh industrial, mining, and agricultural environments.



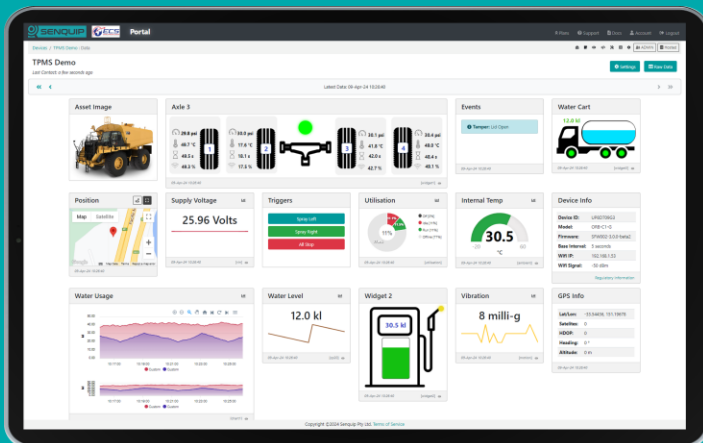
Senquip ORB

For extreme environments where IP ratings are essential and external antennas may be damaged. Typically mounted on poles, walls, and externally on machines



Senquip QUAD

For harsh environments where external antennas are a benefit. Typically found in electrical cabinets, in operator cabs, and mounted externally on machines.



Senquip Portal

The Senquip Portal is a secure cloud solution that offers a no-cost or low-cost device management and data hosting + analytics solution for Senquip devices.



CONNECTING MACHINES TO THE INTERNET