



Fuel Polishing

Diesel attracts water, making it an ideal breeding ground for microbial growth.

Fuel polishers remove water and any foreign matter from the fuel in critical applications like backup generators for hospitals.

Monitor the operation of fuel polishers, filters, and pumps to ensure reliable operation.

Receive alerts for dirty fuel, low fuel levels, blocked filters, or fuel theft.

Reduce the need for on-site visits.

Connect to diesel level and filter pressure sensors with the 4-20mA inputs.

Interface with particulate sensors with RS232, RS485 Modbus, or CAN-Bus.

Write a simple script to detect mass fuel loss events.

Enable SMS and email alerts.

Integrated GPS for location.

Why Senquip?



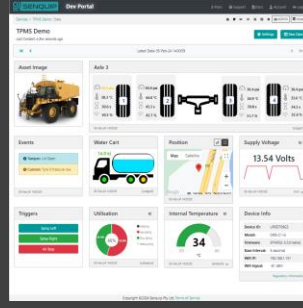
Connect to Anything

Interface to any engine, controller, or sensor, no matter the brand, physical interface, or protocol.



Process Everything

Edge process measured data, create custom alerts, and control connected systems.



Send Anywhere

Send data to the Senquip Portal or any other server. No ongoing costs, no lock in contracts.



Trusted Everywhere

Designed for use in harsh industrial, mining, and agricultural environments.



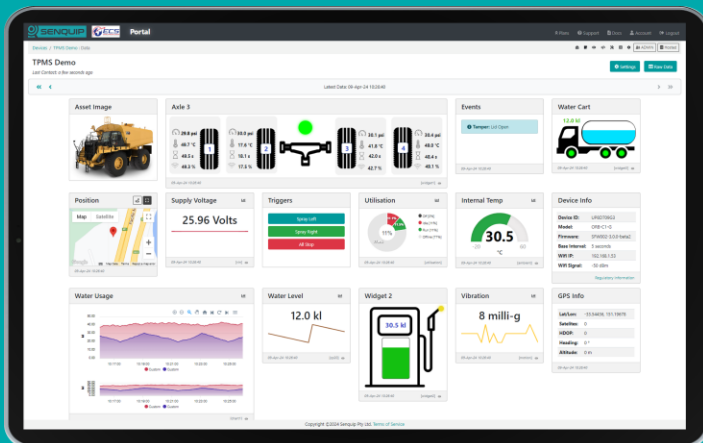
Senquip ORB

For extreme environments where IP ratings are essential and external antennas may be damaged. Typically mounted on poles, walls, and externally on machines



Senquip QUAD

For harsh environments where external antennas are a benefit. Typically found in electrical cabinets, in operator cabs, and mounted externally on machines.



Senquip Portal

The Senquip Portal is a secure cloud solution that offers a no-cost or low-cost device management and data hosting + analytics solution for Senquip devices.



TELEMETRY FOR HARSH ENVIRONMENTS